

ISSN 2518-170X (Online),  
ISSN 2224-5278 (Print)

ҚАЗАҚСТАН РЕСПУБЛИКАСЫ  
ҰЛТТЫҚ ҒЫЛЫМ АКАДЕМИЯСЫНЫҢ  
Қ. И. Сәтпаев атындағы Қазақ ұлттық техникалық зерттеу университеті

# Х А Б А Р Л А Р Ы

---

---

## ИЗВЕСТИЯ

НАЦИОНАЛЬНОЙ АКАДЕМИИ НАУК  
РЕСПУБЛИКИ КАЗАХСТАН  
Казакский национальный исследовательский  
технический университет им. К. И. Сатпаева

## NEWS

OF THE ACADEMY OF SCIENCES  
OF THE REPUBLIC OF KAZAKHSTAN  
Kazakh national research technical university  
named after K. I. Satpayev

**SERIES  
OF GEOLOGY AND TECHNICAL SCIENCES**

**2 (434)**

**MARCH – APRIL 2019**

THE JOURNAL WAS FOUNDED IN 1940

PUBLISHED 6 TIMES A YEAR

ALMATY, NAS RK

---

---

*NAS RK is pleased to announce that News of NAS RK. Series of geology and technical sciences scientific journal has been accepted for indexing in the Emerging Sources Citation Index, a new edition of Web of Science. Content in this index is under consideration by Clarivate Analytics to be accepted in the Science Citation Index Expanded, the Social Sciences Citation Index, and the Arts & Humanities Citation Index. The quality and depth of content Web of Science offers to researchers, authors, publishers, and institutions sets it apart from other research databases. The inclusion of News of NAS RK. Series of geology and technical sciences in the Emerging Sources Citation Index demonstrates our dedication to providing the most relevant and influential content of geology and engineering sciences to our community.*

*Қазақстан Республикасы Ұлттық ғылым академиясы "ҚР ҰҒА Хабарлары. Геология және техникалық ғылымдар сериясы" ғылыми журналының Web of Science-тің жаңаланған нұсқасы Emerging Sources Citation Index-те индекстелуге қабылданғанын хабарлайды. Бұл индекстелу барысында Clarivate Analytics компаниясы журналды одан әрі the Science Citation Index Expanded, the Social Sciences Citation Index және the Arts & Humanities Citation Index-ке қабылдау мәселесін қарастыруда. Web of Science зерттеушілер, авторлар, баспашылар мен мекемелерге контент тереңдігі мен сапасын ұсынады. ҚР ҰҒА Хабарлары. Геология және техникалық ғылымдар сериясы Emerging Sources Citation Index-ке енуі біздің қоғамдастық үшін ең өзекті және беделді геология және техникалық ғылымдар бойынша контентке адалдығымызды білдіреді.*

*НАН РК сообщает, что научный журнал «Известия НАН РК. Серия геологии и технических наук» был принят для индексирования в Emerging Sources Citation Index, обновленной версии Web of Science. Содержание в этом индексировании находится в стадии рассмотрения компанией Clarivate Analytics для дальнейшего принятия журнала в the Science Citation Index Expanded, the Social Sciences Citation Index и the Arts & Humanities Citation Index. Web of Science предлагает качество и глубину контента для исследователей, авторов, издателей и учреждений. Включение Известия НАН РК. Серия геологии и технических наук в Emerging Sources Citation Index демонстрирует нашу приверженность к наиболее актуальному и влиятельному контенту по геологии и техническим наукам для нашего сообщества.*

Б а с р е д а к т о р ы  
э. ғ. д., профессор, ҚР ҰҒА академигі

**И.К. Бейсембетов**

Бас редакторының орынбасары

**Жолтаев Г.Ж.** проф., геол.-мин. ғ. докторы

Р е д а к ц и я а л қ а с ы:

**Абаканов Т.Д.** проф. (Қазақстан)  
**Абишева З.С.** проф., академик (Қазақстан)  
**Агабеков В.Е.** академик (Беларусь)  
**Алиев Т.** проф., академик (Әзірбайжан)  
**Бакиров А.Б.** проф., (Қырғыстан)  
**Беспәев Х.А.** проф. (Қазақстан)  
**Бишимбаев В.К.** проф., академик (Қазақстан)  
**Буктуков Н.С.** проф., академик (Қазақстан)  
**Булат А.Ф.** проф., академик (Украина)  
**Ганиев И.Н.** проф., академик (Тәжікстан)  
**Грэвис Р.М.** проф. (АҚШ)  
**Ерғалиев Г.К.** проф., академик (Қазақстан)  
**Жуков Н.М.** проф. (Қазақстан)  
**Қожахметов С.М.** проф., академик (Қазақстан)  
**Конторович А.Э.** проф., академик (Ресей)  
**Курскеев А.К.** проф., академик (Қазақстан)  
**Курчавов А.М.** проф., (Ресей)  
**Медеу А.Р.** проф., академик (Қазақстан)  
**Мұхамеджанов М.А.** проф., корр.-мүшесі (Қазақстан)  
**Нигматова С.А.** проф. (Қазақстан)  
**Оздоев С.М.** проф., академик (Қазақстан)  
**Постолатий В.** проф., академик (Молдова)  
**Ракишев Б.Р.** проф., академик (Қазақстан)  
**Сейтов Н.С.** проф., корр.-мүшесі (Қазақстан)  
**Сейтмуратова Э.Ю.** проф., корр.-мүшесі (Қазақстан)  
**Степанец В.Г.** проф., (Германия)  
**Хамфери Дж.Д.** проф. (АҚШ)  
**Штейнер М.** проф. (Германия)

«ҚР ҰҒА Хабарлары. Геология мен техникалық ғылымдар сериясы».

**ISSN 2518-170X (Online),**

**ISSN 2224-5278 (Print)**

Меншіктенуші: «Қазақстан Республикасының Ұлттық ғылым академиясы» РҚБ (Алматы қ.).

Қазақстан республикасының Мәдениет пен ақпарат министрлігінің Ақпарат және мұрағат комитетінде  
30.04.2010 ж. берілген №10892-Ж мерзімдік басылым тіркеуіне қойылу туралы куәлік.

Мерзімділігі: жылына 6 рет.

Тиражы: 300 дана.

Редакцияның мекенжайы: 050010, Алматы қ., Шевченко көш., 28, 219 бөл., 220, тел.: 272-13-19, 272-13-18,  
<http://www.geolog-technical.kz/index.php/en/>

---

© Қазақстан Республикасының Ұлттық ғылым академиясы, 2019

Редакцияның Қазақстан, 050010, Алматы қ., Қабанбай батыра көш., 69а.

мекенжайы: Қ. И. Сәтбаев атындағы геология ғылымдар институты, 334 бөлме. Тел.: 291-59-38.

Типографияның мекенжайы: «Аруна» ЖК, Алматы қ., Муратбаева көш., 75.

Г л а в н ы й р е д а к т о р  
д. э. н., профессор, академик НАН РК

**И. К. Бейсембетов**

Заместитель главного редактора

**Жолтаев Г.Ж.** проф., доктор геол.-мин. наук

Р е д а к ц и о н н а я к о л л е г и я:

**Абаканов Т.Д.** проф. (Казахстан)  
**Абишева З.С.** проф., академик (Казахстан)  
**Агабеков В.Е.** академик (Беларусь)  
**Алиев Т.** проф., академик (Азербайджан)  
**Бакиров А.Б.** проф., (Кыргызстан)  
**Беспаяев Х.А.** проф. (Казахстан)  
**Бишимбаев В.К.** проф., академик (Казахстан)  
**Буктуков Н.С.** проф., академик (Казахстан)  
**Булат А.Ф.** проф., академик (Украина)  
**Ганиев И.Н.** проф., академик (Таджикистан)  
**Грэвис Р.М.** проф. (США)  
**Ергалиев Г.К.** проф., академик (Казахстан)  
**Жуков Н.М.** проф. (Казахстан)  
**Кожаметов С.М.** проф., академик (Казахстан)  
**Конторович А.Э.** проф., академик (Россия)  
**Курскеев А.К.** проф., академик (Казахстан)  
**Курчавов А.М.** проф., (Россия)  
**Медеу А.Р.** проф., академик (Казахстан)  
**Мухамеджанов М.А.** проф., чл.-корр. (Казахстан)  
**Нигматова С.А.** проф. (Казахстан)  
**Оздоев С.М.** проф., академик (Казахстан)  
**Постолатий В.** проф., академик (Молдова)  
**Ракишев Б.Р.** проф., академик (Казахстан)  
**Сейтов Н.С.** проф., чл.-корр. (Казахстан)  
**Сейтмуратова Э.Ю.** проф., чл.-корр. (Казахстан)  
**Степанец В.Г.** проф., (Германия)  
**Хамфери Дж.Д.** проф. (США)  
**Штейнер М.** проф. (Германия)

«Известия НАН РК. Серия геологии и технических наук».

**ISSN 2518-170X (Online),**

**ISSN 2224-5278 (Print)**

Собственник: Республиканское общественное объединение «Национальная академия наук Республики Казахстан (г. Алматы)

Свидетельство о постановке на учет периодического печатного издания в Комитете информации и архивов Министерства культуры и информации Республики Казахстан №10892-Ж, выданное 30.04.2010 г.

Периодичность: 6 раз в год

Тираж: 300 экземпляров

Адрес редакции: 050010, г. Алматы, ул. Шевченко, 28, ком. 219, 220, тел.: 272-13-19, 272-13-18,  
<http://nauka-nanrk.kz/geology-technical.kz>

---

© Национальная академия наук Республики Казахстан, 2019

Адрес редакции: Казахстан, 050010, г. Алматы, ул. Кабанбай батыра, 69а.

Институт геологических наук им. К. И. Сатпаева, комната 334. Тел.: 291-59-38.

Адрес типографии: ИП «Аруна», г. Алматы, ул. Муратбаева, 75

E d i t o r i n c h i e f

doctor of Economics, professor, academician of NAS RK

**I. K. Beisembetov**

Deputy editor in chief

**Zholtayev G.Zh.** prof., dr. geol-min. sc.

E d i t o r i a l b o a r d:

**Abakanov T.D.** prof. (Kazakhstan)  
**Abisheva Z.S.** prof., academician (Kazakhstan)  
**Agabekov V.Ye.** academician (Belarus)  
**Aliyev T.** prof., academician (Azerbaijan)  
**Bakirov A.B.** prof., (Kyrgyzstan)  
**Bespayev Kh.A.** prof. (Kazakhstan)  
**Bishimbayev V.K.** prof., academician (Kazakhstan)  
**Buktukov N.S.** prof., academician (Kazakhstan)  
**Bulat A.F.** prof., academician (Ukraine)  
**Ganiyev I.N.** prof., academician (Tadjikistan)  
**Gravis R.M.** prof. (USA)  
**Yergaliev G.K.** prof., academician (Kazakhstan)  
**Zhukov N.M.** prof. (Kazakhstan)  
**Kozhakhmetov S.M.** prof., academician (Kazakhstan)  
**Kontorovich A.Ye.** prof., academician (Russia)  
**Kurskeyev A.K.** prof., academician (Kazakhstan)  
**Kurchavov A.M.** prof., (Russia)  
**Medeu A.R.** prof., academician (Kazakhstan)  
**Muhamedzhanov M.A.** prof., corr. member. (Kazakhstan)  
**Nigmatova S.A.** prof. (Kazakhstan)  
**Ozdoyev S.M.** prof., academician (Kazakhstan)  
**Postolatii V.** prof., academician (Moldova)  
**Rakishev B.R.** prof., academician (Kazakhstan)  
**Seitov N.S.** prof., corr. member. (Kazakhstan)  
**Seitmuratova Ye.U.** prof., corr. member. (Kazakhstan)  
**Stepanets V.G.** prof., (Germany)  
**Humphery G.D.** prof. (USA)  
**Steiner M.** prof. (Germany)

**News of the National Academy of Sciences of the Republic of Kazakhstan. Series of geology and technology sciences.**

**ISSN 2518-170X (Online),**

**ISSN 2224-5278 (Print)**

Owner: RPA "National Academy of Sciences of the Republic of Kazakhstan" (Almaty)

The certificate of registration of a periodic printed publication in the Committee of information and archives of the Ministry of culture and information of the Republic of Kazakhstan N 10892-Ж, issued 30.04.2010

Periodicity: 6 times a year

Circulation: 300 copies

Editorial address: 28, Shevchenko str., of. 219, 220, Almaty, 050010, tel. 272-13-19, 272-13-18,  
<http://nauka-nanrk.kz/geology-technical.kz>

---

© National Academy of Sciences of the Republic of Kazakhstan, 2019

Editorial address: Institute of Geological Sciences named after K.I. Satpayev  
69a, Kabanbai batyr str., of. 334, Almaty, 050010, Kazakhstan, tel.: 291-59-38.

Address of printing house: ST "Aruna", 75, Muratbayev str, Almaty

**NEWS**

OF THE NATIONAL ACADEMY OF SCIENCES OF THE REPUBLIC OF KAZAKHSTAN

**SERIES OF GEOLOGY AND TECHNICAL SCIENCES**

ISSN 2224-5278

Volume 2, Number 434 (2019), 159 – 165

<https://doi.org/10.32014/2019.2518-170X.50>

UDC 624.21:620.178

**V. G. Solonenko, N. M. Makhmetova, J. S. Musayev, S. E. Bekzhanova, M. Ya. Kvashnin**

Kazakh academy of transport and communications named after M. Tynyshpaev, Almaty, Kazakhstan.

E-mail: v.solonenko@mail.ru, makhmetova\_n1958@mail.ru, mussayev75@yandex.kz,  
s.bekzhanova@bk.ru, kvashnin\_mj55@mail.ru**STRESSES IN ELEMENTS OF METAL RAILWAY BRIDGES  
UNDER THE ACTION OF THE CREW**

**Abstract.** The necessity of application of mobile measuring and computing systems during the examination of extended metal span structures of railway bridges is justified in the article, and also the stresses appearing in the elements of the structure of the farm under the influence of different types of rolling stock are presented.

**Keywords:** bridge, crew, metal truss, span structure, reliability, voltage.

Now in the countries of Europe, Asia and the USA numerous researches are carried out for an estimation of a technical condition and diagnostics of maintained artificial constructions on dynamic parameters. A particularly noticeable breakthrough in this direction occurred in the 90's. of the last century, when powerful portable computers were created, and an evaluation of the stress-strain state of the system under the influence of external loads became an affordable and accessible tool for practical engineers.

Thus, the use of automated measuring systems (AIS) for the collection and processing of data in the testing process is becoming increasingly important. If monitoring is required, i.e. long-term monitoring of the condition of the facility under construction, AIS proves to be the only acceptable one, since it allows not only to completely abandon numerous observers, but can also be equipped with a decision-making system for automatic prevention of emergency situations.

Thus, at the current stage, a VAT study of bridge structures is most effective using AIS. This allows you to more deeply analyze the experimental data and find the best solutions to improve their reliability

When determining the load capacity of span structures, they are tested in accordance with [1] to refine the actual stress state of the elements, especially in the presence of defects and damages, the influence of which on load-carrying capacity is difficult to take into account theoretically.

Professor N.G. Cooper [2] defined the primary task to be studied within the framework of the interaction of bridges and rolling stock: the identification and analysis of the conditions under which dynamic deformations and movements in the "bridge-train" system have the most unfavorable combination during operation.

Since the load from the rolling stock is concentrated at the locations of the axles of the trolleys, the deflections of the span structure at each moment of time will correspond to the flexural deformations and it is always possible to find its two positions giving the greatest and the least static deflections of the span structure.

From measured values of flexural deformations, knowing the design modulus of elasticity of the construction material, according to Hooke's law, one can make a transition to the actual stresses in the bridge structure. Periodic measurement of deformations (stresses) of a span structure under a mobile load for 2-3 years will make it possible to predict the change in its state in time and determine the remaining life by carrying capacity and carrying capacity [3, 4].

The calculated values of the controlled parameters, for example, the stresses in the elements of the span structure, can be determined both by engineering methods and by means of specialized computational software that implements the finite element methods (MIDAS Civil, APM Civil Engineering, APM Structure3D module, Cosmos M).

The advantage of using finite element models is the ability to simulate various malfunctions in a design, adapting the calculation results to actual operating conditions. By deviating the actual stresses from the calculated values, it is possible to judge the degree of damage to the structures of the span structure of the bridge.

At the present time, the planned transition to an automated control system for the maintenance of artificial structures (ACS ISSO) with a database (including in digital form) of the results of surveys, tests, diagnostics and monitoring is becoming more urgent.

In this paper, the results of full-scale measurements of stresses from the train load in the elements of the span structures of a railway metal bridge across the Irtysh River at 657 km of the single-track section of Semipalatinsk-Zhana-Semey constructed in 1929 are presented. Span structures are represented by metal trusses with a polygonal outline of the upper belt. Figure 1 shows the scheme of the bridge transition.

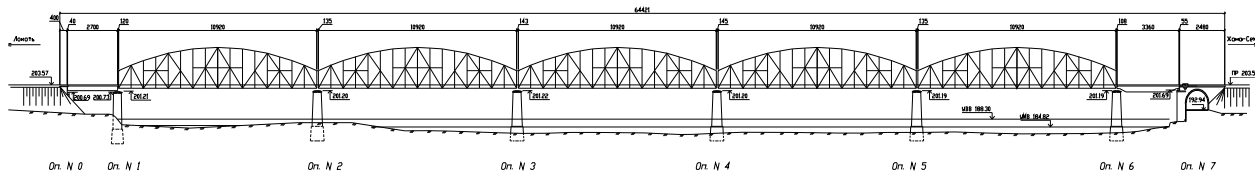


Figure 1 – Scheme of railway metal bridge across the Irtysh River in the city of Semey

On the bridge on the supports there are five metal trusses in the channel part of the Irtysh River with a calculated span  $L_p=109.2\text{m}$  with a ride down. The riveted metal trusses were made in 1928 from Art.3 according to the norms of 1921. Farms - with polygonal upper belt and triangular lattice with springs, are combined by means of longitudinal and transverse connections and a beam cage of the carriageway.

In the eighth panel of each channel span structure, a deformation (temperature) rupture of the longitudinal beams of the carriageway is carried out, with the end of the longitudinal beam supported on a metal "table" attached to the wall of the transverse beam. Each farm consists of 16 equal panels with a length of 6.825m, the height of the truss on the support is 7.8m, in the middle of the farm is 18.2m, the distance along the axes of the farms is 6.1m, the distance between the axes of the longitudinal beams is 2.0m. The joints of the elements are made on rivets.

The diagram of the span structures 1-5 is shown in figures 2 and 3 shows the arrangement of strain gauges on the elements of the structure of span structures 1 and 5.

The measurements were carried out in accordance with the requirements of [1] using a tensometric measuring and computing system consisting of certified and certified measuring instruments of the world's leading manufacturers. The complex makes it possible to produce precision (high-precision) measurements of stresses and relative deformations in elements of the track and span structures of bridges from the impact of rolling stock simultaneously in 16 sections with a total length of up to 500 m.

The accuracy class of the measuring equipment is 0.1, the error of the measurement results given in this study was in the range from 5 to 7%.

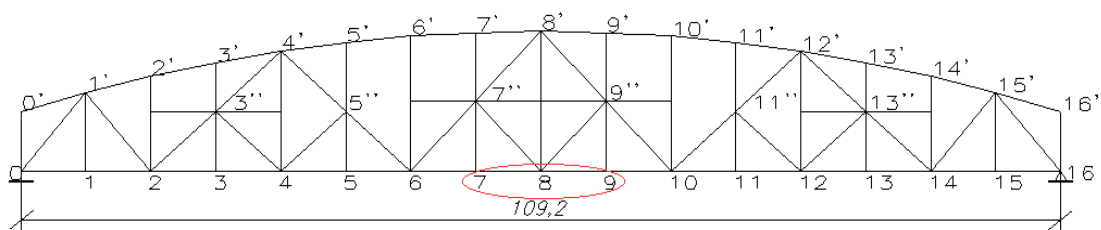


Figure 2 – Schematic of span structures 1-5

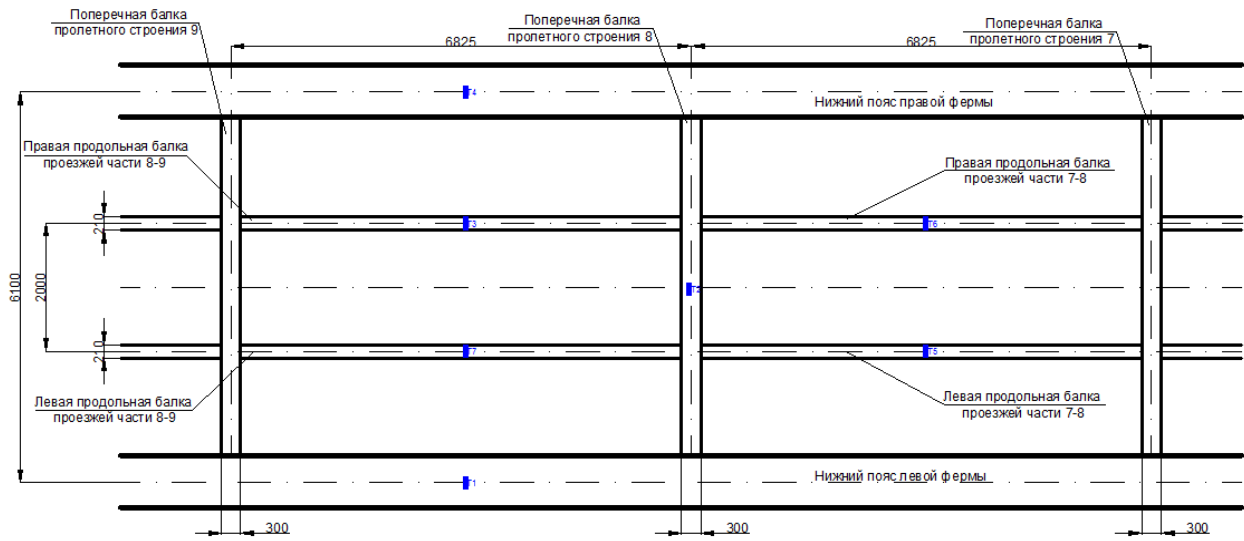


Figure 3 – Scheme of arrangement of strain gauges on span structures 1 and 5:

- T1 - Strain gauge №1, on the lower belt of the left farm;
- T2 - Load cell №2, on transverse beam №8 of the span structure;
- T3 - Load cell №3, on the right longitudinal beam of the roadway 8-9;
- T4 - Strain gauge №4, on the lower belt of the right farm;
- T5 - Strain gauge №5, on the right longitudinal beam of the roadway 7-8;
- T6 - Strain gauge №1, on the left longitudinal beam of the roadway 7-8;
- T7 - Strain gauge №1, on the left longitudinal beam of the roadway 8-9

The complex was tested at a number of facilities of JSC "NC" KTZh "and showed good results in evaluating the effectiveness of reinforcing railway bridge structures with a composite material [5-6] and determining the impact of dynamic rolling stock impact on the railway track and span structures of bridges [7-15].

As an example, figures 4-7 show diagrams of stress changes in the elements of the span structure 1 when passing through the span structure of locomotive TEZ3A with cargo composition ("assembly") at a speed of 25 km/h.

From the diagrams shown, it is seen (figure 4a, b) that the stresses in the left and right belts of the trusses differ insignificantly (within 2 MPa). This circumstance indicates a uniform distribution of the movable load in the plane across the bridge and the absence of displacement of the axis of the path relative to the axis of the span structure.

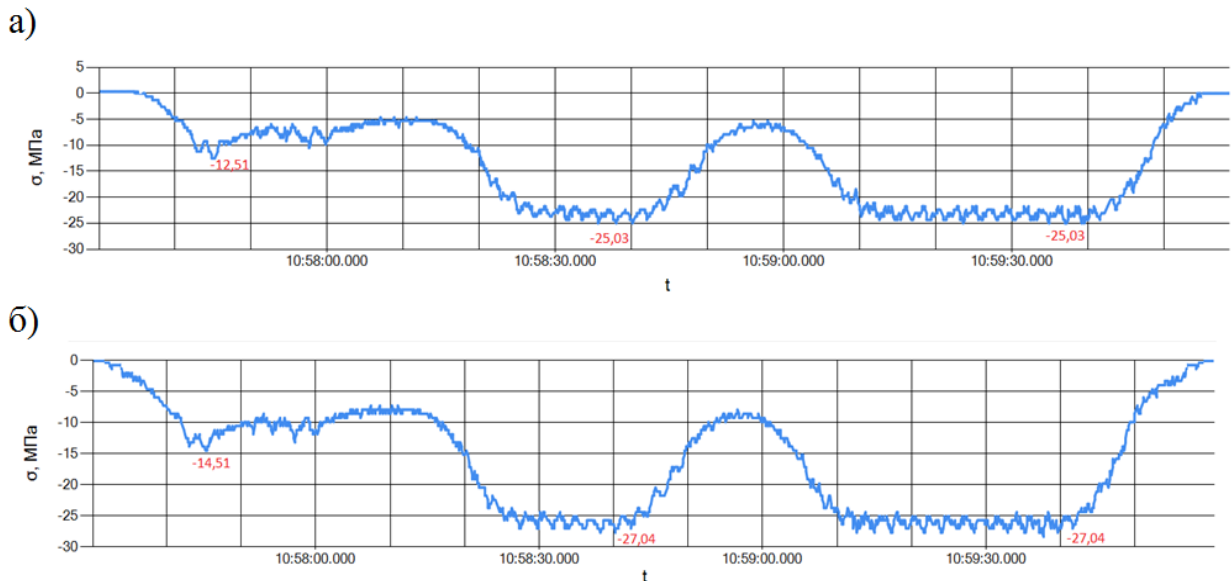


Figure 4 – Variation in stresses in the left (a) and right (b) lower belts of the trusses (panel 8-9) of the span structure 1 when the locomotive TEZ3A is passed with the freight train ("assembly")



The stress diagrams in the belts of the trusses differ significantly from the stress diagrams in the elements of the carriageway, both in appearance, and in terms of the quantitative characteristics of the stresses and their qualitative composition. In particular, the greatest stresses in the left and right longitudinal beam of the carriageway (panel 7-8) of the span structure 1 are observed from the action of the locomotive when entering the bridge and from the impact of the loaded bunkers in the middle and loaded gondolas at the end of the composition (figure 5a, b), and they are almost equivalent in quantitative characteristics.

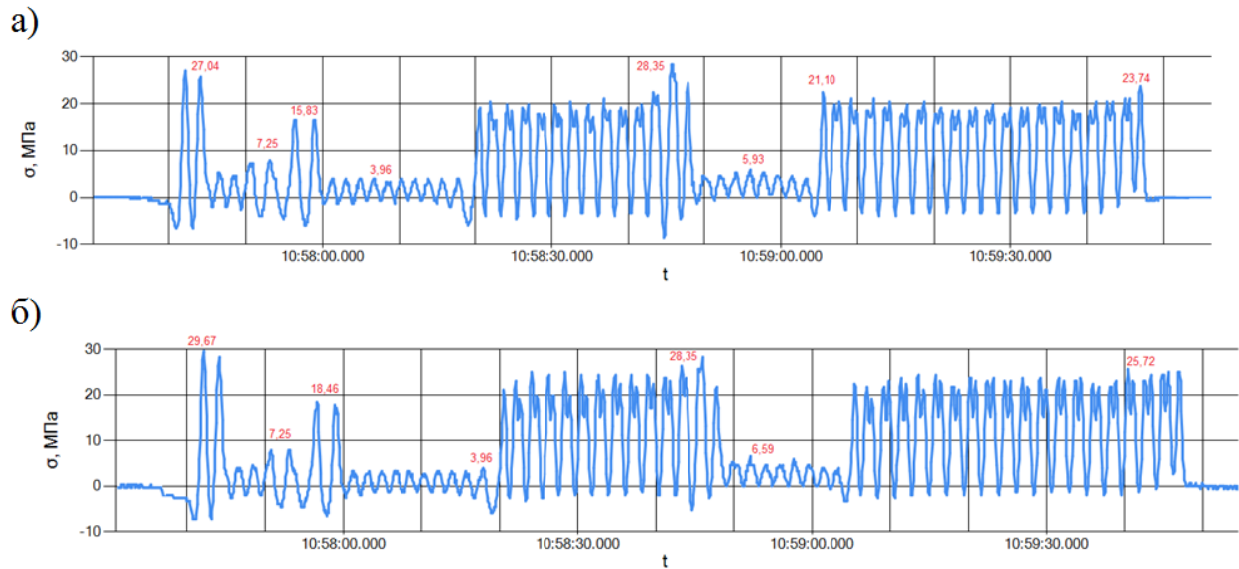


Figure 5 – Variation in the stresses in the left (a) and right (b) longitudinal beams of the carriageway (panel 7-8) of the span structure 1 when the locomotive TEZ3A with the freight train ("assembly") passes

The greatest stresses appearing in the belts of the trusses when exposed to the same loaded bunkers in the middle and loaded gondola cars at the end of the composition, are 2 times higher than the stresses from the locomotive effect (figure 4a, b).

This is explained, firstly, by the fact that empty tanks and gondola cars are located in the head of the convoy, and secondly, when the vehicle is moving at a low speed (25 km/h), the span structure is not fully loaded yet.

The stresses in the transverse beam (8) of the carriageway of the span structure 1 when passing the loaded bunkers in the middle and the laden open-top wagons at the end of the composition (figure 6) do not fall below 12 MPa.

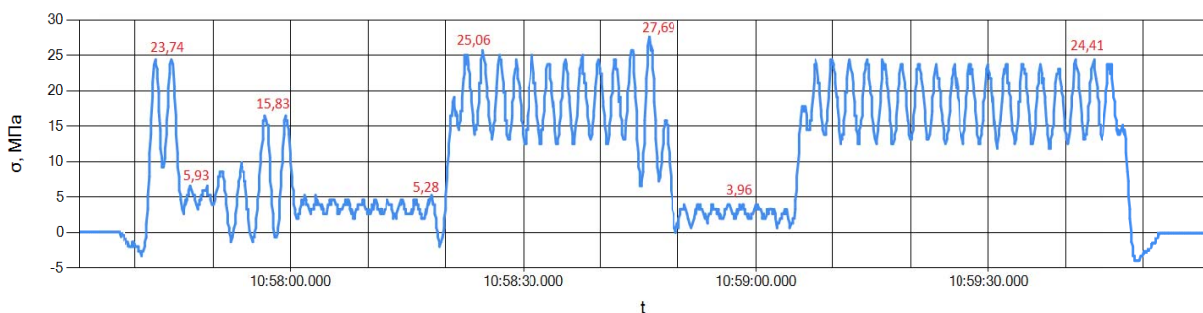


Figure 6 – Variation of stresses in the transverse beam (8) of the carriageway of the span structure 1 when the locomotive TEZ3A is passed with the freight train ("assembly")

It should be noted that the maximum stresses at the passage of this composition are fixed in the left and right longitudinal beams of the carriageway (panel 8-9) of the span structure 1 (figure 7a, b).

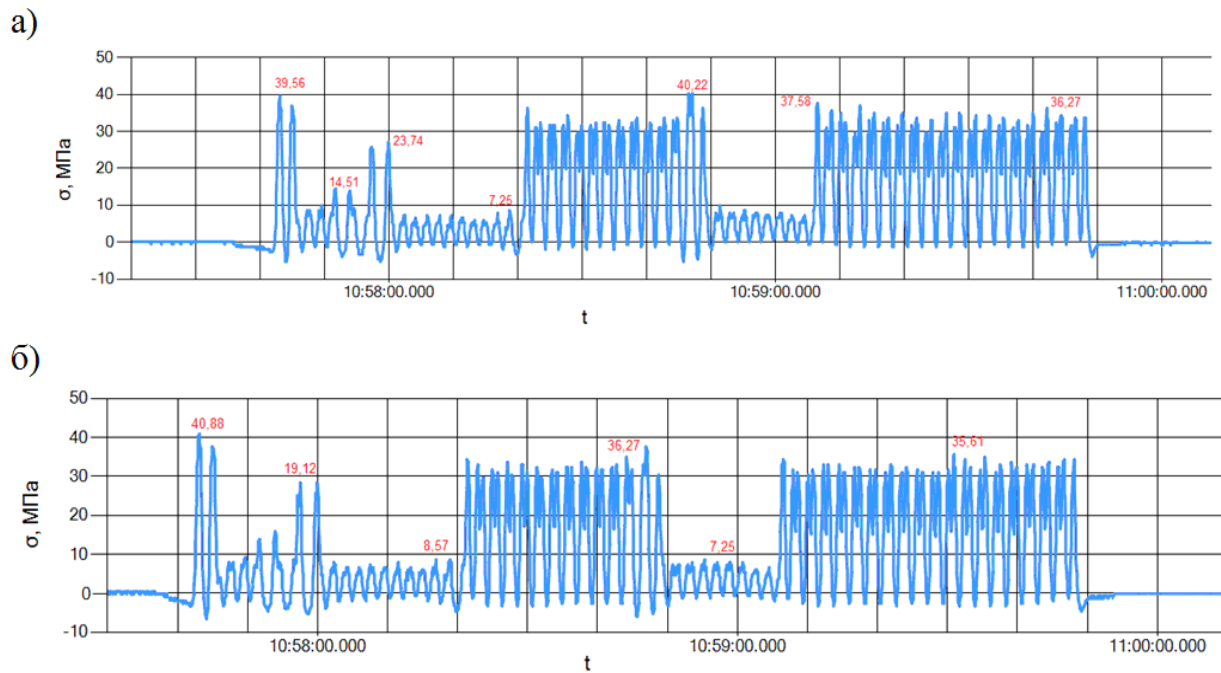


Figure 7 – Change of stresses in the left (a) and right (b) longitudinal beam of the carriageway (panel 8-9) of the span structure 1 when the locomotive TEZ3A is passed with the freight train ("assembly")

Extremes of measured stresses in elements of the structure of trusses

# p.	Type of rolling stock	Lower Belt of the Left Truss T 1	Lower Belt of the Right Farm T 4	Right longitudinal beam of the roadway (7-8) T 6	Right longitudinal beam of the roadway (7-8) T 5	Right longitudinal beam of the roadway (8-9) T 3	Left longitudinal beam of the roadway (8-9) T 7	Cross beam of the roadway (8) T 2
1	2	3	4	5	6	7	8	9
Measured stresses in structural elements of PS 1, MPa								
1	Single SKD6	-10	-10	28	27	39	38	23
2	Single TE33A	-9, -9	-10, -9	32, 29	28, 30	42, 41	39, 41	25, 26
3	Talgo	-14	-14	31	28	38	41	26
4	Passenger	-12, -12, -12, -14, -12, -12	-12, -12, -12, -9, -12, -12	30, 30, 30, 30, 31, 32	28, 26, 27, 28, 27, 28	40, 41, 40, 40, 43, 41	41, 40, 38, 38, 40, 40	26, 26, 26, 27, 26, 26
5	Empty Cargo	-19, -11, -12	-19, -11, -11	27, 30, 28	28, 26, 28	39, 42, 40	40, 39, 41	28, 26, 27
6	Cargo laden	-26	-28	29	27	38	41	29
7	Cargo prefabricated	-25, -22, -24, -25, -28	-28, -21, -25, -24, -28	30, 31, 30, 28, 29	28, 28, 28, 25, 27	41, 41, 42, 38, 39	40, 40, 39, 37, 42	28, 28, 29, 28, 30
Measured stresses in structural elements of PS 5, MPa								
8	Single SKD6	-10	-10	33	32	25	28	25
9	Single TE33A	-10, -10	-10, -11	34, 34	34, 34	28, 25	29, 30	26, 27
10	Single 2ТЭ10М	-16	-16	33	32	24	27	27
11	Cone of locomotives ТЭ33А and СКД6	-16	-17	34	34	26	29	26
12	Talgo	-12, -12	-13, -12	34, 34	34, 34	27, 26	27, 29	26, 26
13	Passenger	-13, -14, -12, -12, -12	-13, -12, -12, -13, -13	32, 33, 33, 34, 33	35, 32, 36, 32, 36	27, 26, 23, 26, 23	28, 29, 26, 28, 28	28, 26, 26, 26, 26
14	Empty Cargo	-26, -23	-27, -23	34, 33	33, 33	27, 26	24, 25	27, 28
15	Cargo laden	-27, -27, -27, -26, -26	-27, -26, -29, -27, -26	32, 34, 33, 33, 34	32, 33, 35, 32, 32	23, 26, 25, 25, 26	29, 30, 27, 28, 28	28, 28, 26, 29, 29
16	Cargo prefabricated	-28, -26	-28, -26	35, 33	34, 35	27, 25	30, 26	29, 28

As is known, the bridge class (load-carrying capacity of the bridge) is determined by the weakest element of the defective span structure itself. Table shows the extremes of the measured stresses in the elements of the structures of span structures 1 and 5 that arise when different types of rolling stock are exposed. It can be seen that the stresses in the longitudinal beams of the carriageway of the span structure 1 considerably (by 30-35%) exceed the stresses in similar beams of the span structure 5.

**Conclusions.** Analysis of the measured stresses in the elements of the span structures under the rolling stock, in general, showed the joint work of the structural elements of the trusses, the uniform distribution of the mobile load in the plane across the bridge and, accordingly, the absence of displacement of the track axis relative to the span axis.

However, from the analysis of the stresses presented in table 1 (columns 7.8), it can be concluded that the stresses in the longitudinal beams of the carriageway of the span structure 1 are significantly (by 30-35%) higher than the stresses in similar beams of the span structure 5. Consequently, the longitudinal beams of the carriageway of the span structure 1 have a lower margin of strength, and, correspondingly, of a bearing capacity than the longitudinal beams of the span structure 5.

The use of digital technologies in the measurement and analysis of stresses in the elements of trusses from the impact of various rolling stock made it possible to identify the most faulty span structure and significantly reduce the labor costs for conducting a survey of the structure.

**В. Г. Солоненко, Н. М. Махметова, Ж. С. Мусаев, С. Е. Бекжанова, М. Я. Квашнин**

М. Тынышбаев атындағы Қазақ көлік және коммуникациялар академиясы, Алматы, Қазақстан

#### **ЭКИПАЖ ӘСЕРІНДЕГІ МЕТАЛДЫ ТЕМІРЖОЛ КӨПІРІ ЭЛЕМЕНТТЕРІНДЕГІ КЕРНЕУЛЕР**

**Аннотация.** Мақалада теміржол көпірінің металды аралық құрылымының зерттеу кезінде мобильді өлшеуші-есептеуші кешенді қолдану қажеттілігі негізделген, сондай ақ жылжымалы құрамның әртүрлі типтерінің әсер ету кезіндегі ферма конструкциясы элементтерінде пайда болатын кернеулер келтірілген.

**Түйін сөздер:** көпір, экипаж, металды ферма, аралық құрылым, сенімділік, кернеу.

**В. Г. Солоненко, Н. М. Махметова, Ж. С. Мусаев, С. Е. Бекжанова, М. Я. Квашнин**

Казахская академия транспорта и коммуникаций им. М. Тынышпаева, Алматы, Казахстан

#### **НАПРЯЖЕНИЯ В ЭЛЕМЕНТАХ МЕТАЛЛИЧЕСКИХ ЖЕЛЕЗНОДОРОЖНЫХ МОСТОВ ПРИ ВОЗДЕЙСТВИИ ЭКИПАЖА**

**Аннотация.** В статье обоснована необходимость применения мобильных измерительно-вычислительных комплексов при обследовании протяженных металлических пролетных строений железнодорожных мостов, а также представлены напряжения, возникающие в элементах конструкции фермы при воздействии различных типов подвижного состава.

**Ключевые слова:** мост, экипаж, металлическая ферма, пролетное строение, надежность, напряжения.

#### **Information about authors:**

Solonenko Vladimir, Professor, Doctor of Technical sciences, Kazakh academy of transport and communications named after M. Tynyshpaev, Almaty, Kazakhstan; v.solonenko@mail.ru; <https://orcid.org/0000-0001-6503-6598>

Makhmetova Narzankul, Professor, Doctor of Technical sciences, Kazakh academy of transport and communications named after M. Tynyshpaev, Almaty, Kazakhstan; makhmetova\_n1958@mail.ru; <https://orcid.org/0000-0001-7324-5832>

Musayev Janat, Professor, Doctor of Technical sciences, Kazakh academy of transport and communications named after M. Tynyshpaev, Almaty, Kazakhstan; mussayev75@yandex.kz; <https://orcid.org/0000-0001-7382-5626>

Bekzhanova Saule, Professor, Doctor of Technical sciences, Kazakh academy of transport and communications named after M. Tynyshpaev, Almaty, Kazakhstan; s.bekzhanova@bk.ru; <https://orcid.org/0000-0001-6272-9567>

Kvashnin Mikhail, Associated Professor, Candidate of Technical sciences, Kazakh academy of transport and communications named after M. Tynyshpaev, Almaty, Kazakhstan; kvashnin\_mj55@mail.ru; <https://orcid.org/0000-0002-3969-9299>

## REFERENCES

- [1] SP 79.13330.2012 Mosty i truby. Pravila obsledovaniy i ispytaniy. Aktualizirovannaya redaktsiya SNIp 3.06.07-86 / Gosstroy SSSR. M.: Minregion Rossii, 2012.
- [2] Bondar' N.G., Koz'min Yu.G., Roytburd Z.G., Tarasenko V.P., Yakovlev G.N. Vzaimodeystviye zheleznodorozhnykh mostov s podvizhnym sostavom / Pod red. N.G. Bondarya. M.: Transport, 1984. 272 p.
- [3] Bondar' I.S., Kvashnin M.Ya., Kosenko S.A. Diagnostika i monitoring balochnykh proletnykh stroyeniy zheleznodorozhnykh mostov // Materialy IKH Mezhdunarodnoy nauchno-tekhnicheskoy konferentsii «Politransportnyye sistemy» po napravleniyu «Nauchnyye problemy realizatsii transportnykh proyektov Sibiri i na Dal'nem Vostoke». Novosibirsk: SGUPS, 2017. P. 35-43.
- [4] Kvashnin M.Ya., Bondar' I.S., Zhangabylova A.M. Monitoring vozdeystviya podvizhnogo sostava na balochnyye proletnyye stroyeniya zheleznodorozhnykh mostov // Materialy Mezhdunarodnoy nauchno-prakticheskoy konferentsii «Transportnaya nauka i innovatsii». Almaty: KazATK, 2015. P. 275-279.
- [5] Kuanyshev B.M., Kvashnin M.Ya. Otsenka effektivnosti usileniya konstruksiy zheleznodorozhnykh mostov kompozitnym materialom // Vestnik KGUSTA. 2016. N 1(51). P. 238-244.
- [6] Kvashnin M.Ya., Bondar' I.S., Rystygulov P.A., Kystaubayev S.B. Eksperimental'nyye issledovaniya konstruksiy zheleznodorozhnykh mostov, usilivayemykh kompozitnym materialom // Trudy Shestnadsatoy nauchno-prakticheskoy konferentsii «Bezopasnost' dvizheniya poyezdov». M.: MGUPS (MIIT), 2015. Vol. II. P. II-43 – II-47.
- [7] Kosenko S.A., Kvashnin M.Ya., Ismagulova S.O., Kvashnin N.M. Eksperimental'noye opredeleniye dinamicheskikh kharakteristik zheleznodorozhnogo puti // Analiticheskiy otraslevoyy zhurnal «Trans ekspress Kazakhstan». Almaty, 2013. N 3(48). P. 50-54.
- [8] Kvashnin M.Ya., Kosenko S.A., Kvashnin N.I., Bondar' I.S. Eksperimental'nyye issledovaniya vibrodinamicheskogo vozdeystviya podvizhnoy nagruzki na osnovnyuyu ploshchadku zemlyanogo polotna v kholodnykh regionakh // Materialy vtorogo Mezhdunarodnogo simpoziuma po problemam zemlyanogo polotna v kholodnykh regionakh. Novosibirsk: SGUPS, 2015. P. 147-157.
- [9] Kvashnin M.Ya., Burombayev S.A., Bondar' I.S., Zhangabylova A.M. Vliyaniye vibrodinamicheskogo vozdeystviya lokomotivov s vysokimi osevyimi nagruzkami na zh.d. put' i balochnyye zh.b. proletnyye stroyeniya mostov // Trudy KHII Mezhdunarodnoy nauchno-tekhnicheskoy konferentsii «Sovremennyye problemy proyektirovaniya, stroitel'stva i ekspluatatsii zheleznodorozhnogo puti». Chteniya, posvyashchennyye pamyati professora G. M. Shakhunyantsa. M.: MGUPS (MIIT), 2015. P. 163-166.
- [10] Kvashnin M.Ya., Bondar' I.S., Zhangabylova A.M. Monitoring vozdeystviya podvizhnogo sostava na balochnyye proletnyye stroyeniya zheleznodorozhnykh mostov // Materialy Mezhdunarodnoy nauchno-prakticheskoy konferentsii «Transportnaya nauka i innovatsii», posvyashchennoy poslaniyu Prezidenta RK N. A. Nazarbayeva «Nurly zhol – put' v budushcheye». Almaty: KazATK, 2015. P. 275-279.
- [11] Burombayev S.A., Kvashnin M.Ya. Diagnostika i monitoring iskusstvennykh sooruzheniy magistral'nykh liniy AO «NK «KTZH» // Vestnik KazATK. 2016. N 3(98). P. 39-58.
- [12] Makhmetova N.M., Kvashnin M.Ya., Kvashnin N.M. Eksperimental'nyy metod otsenki dinamicheskogo vozdeystviya ekipazha na put' // Povysheniye dinamicheskikh kachestv podvizhnogo sostava i poyezda: mezhvuzovskiy temacheskoy sbornik nauchnykh trudov. Omsk: OmGUPS, 2013. P. 7-16.
- [13] Kvashnin M.Ya., Kosenko S.A., Bondar' I.S. Vibrodiagnostika podkhodnoy nasypi zheleznodorozhnogo mosta // Vestnik Sibirskogo gosudarstvennogo universiteta putey soobshcheniya. 2017. N 2(41). P. 34-40.
- [14] Kosenko S.A., Kvashnin M.Ya., Bondar' I.S., Akimov S.S. Opredeleniye napryazheniy v rel'se pri vozdeystvii podvizhnogo sostava // Izvestiya Transsiba / Omsk: Omskiy gos. un-t putey soobshcheniya, 2017. N 2(30). P. 61-73.
- [15] Solonenko V.G., Makhmetova N.M., Musayev J.S., Bekzhanova S.E., Kvashnin M.Ya. Determination of rail voltages after impact of mobile composition // News of the National Academy of Sciences of the Republic of Kazakhstan. Series of geology and technical sciences. 2017. Vol. 5, N 425. P. 262-269 (in Eng.). doi.org/10.32014/2018.2518-170X.

**Publication Ethics and Publication Malpractice  
in the journals of the National Academy of Sciences of the Republic of Kazakhstan**

For information on Ethics in publishing and Ethical guidelines for journal publication see <http://www.elsevier.com/publishingethics> and <http://www.elsevier.com/journal-authors/ethics>.

Submission of an article to the National Academy of Sciences of the Republic of Kazakhstan implies that the described work has not been published previously (except in the form of an abstract or as part of a published lecture or academic thesis or as an electronic preprint, see <http://www.elsevier.com/postingpolicy>), that it is not under consideration for publication elsewhere, that its publication is approved by all authors and tacitly or explicitly by the responsible authorities where the work was carried out, and that, if accepted, it will not be published elsewhere in the same form, in English or in any other language, including electronically without the written consent of the copyright-holder. In particular, translations into English of papers already published in another language are not accepted.

No other forms of scientific misconduct are allowed, such as plagiarism, falsification, fraudulent data, incorrect interpretation of other works, incorrect citations, etc. The National Academy of Sciences of the Republic of Kazakhstan follows the Code of Conduct of the Committee on Publication Ethics (COPE), and follows the COPE Flowcharts for Resolving Cases of Suspected Misconduct ([http://publicationethics.org/files/u2/New\\_Code.pdf](http://publicationethics.org/files/u2/New_Code.pdf)). To verify originality, your article may be checked by the Cross Check originality detection service <http://www.elsevier.com/editors/plagdetect>.

The authors are obliged to participate in peer review process and be ready to provide corrections, clarifications, retractions and apologies when needed. All authors of a paper should have significantly contributed to the research.

The reviewers should provide objective judgments and should point out relevant published works which are not yet cited. Reviewed articles should be treated confidentially. The reviewers will be chosen in such a way that there is no conflict of interests with respect to the research, the authors and/or the research funders.

The editors have complete responsibility and authority to reject or accept a paper, and they will only accept a paper when reasonably certain. They will preserve anonymity of reviewers and promote publication of corrections, clarifications, retractions and apologies when needed. The acceptance of a paper automatically implies the copyright transfer to the National Academy of Sciences of the Republic of Kazakhstan.

The Editorial Board of the National Academy of Sciences of the Republic of Kazakhstan will monitor and safeguard publishing ethics.

Правила оформления статьи для публикации в журнале смотреть на сайте:

[www.nauka-nanrk.kz](http://www.nauka-nanrk.kz)

**ISSN 2518-170X (Online), ISSN 2224-5278 (Print)**

<http://www.geolog-technical.kz/index.php/en/>

*Верстка Д. Н. Калкабековой*

Подписано в печать 12.04.2019.  
Формат 70x881/8. Бумага офсетная. Печать – ризограф.  
15,2 п.л. Тираж 300. Заказ 2.