

ISSN 2518-170X (Online),
ISSN 2224-5278 (Print)

ҚАЗАҚСТАН РЕСПУБЛИКАСЫ
ҰЛТТЫҚ ҒЫЛЫМ АКАДЕМИЯСЫНЫҢ
Қ. И. Сәтпаев атындағы Қазақ ұлттық техникалық зерттеу университеті

Х А Б А Р Л А Р Ы

ИЗВЕСТИЯ

НАЦИОНАЛЬНОЙ АКАДЕМИИ НАУК
РЕСПУБЛИКИ КАЗАХСТАН
Қазақстанның ұлттық ғылым академиясының
Қ. И. Сәтпаев атындағы техникалық зерттеу университеті

NEWS

OF THE ACADEMY OF SCIENCES
OF THE REPUBLIC OF KAZAKHSTAN
Kazakh national research technical university
named after K. I. Satpayev

**SERIES
OF GEOLOGY AND TECHNICAL SCIENCES**

1 (433)

JANUARY – FEBRUARY 2019

THE JOURNAL WAS FOUNDED IN 1940

PUBLISHED 6 TIMES A YEAR

ALMATY, NAS RK

NAS RK is pleased to announce that News of NAS RK. Series of geology and technical sciences scientific journal has been accepted for indexing in the Emerging Sources Citation Index, a new edition of Web of Science. Content in this index is under consideration by Clarivate Analytics to be accepted in the Science Citation Index Expanded, the Social Sciences Citation Index, and the Arts & Humanities Citation Index. The quality and depth of content Web of Science offers to researchers, authors, publishers, and institutions sets it apart from other research databases. The inclusion of News of NAS RK. Series of geology and technical sciences in the Emerging Sources Citation Index demonstrates our dedication to providing the most relevant and influential content of geology and engineering sciences to our community.

Қазақстан Республикасы Ұлттық ғылым академиясы "ҚР ҰҒА Хабарлары. Геология және техникалық ғылымдар сериясы" ғылыми журналының Web of Science-тің жаңаланған нұсқасы Emerging Sources Citation Index-те индекстелуге қабылданғанын хабарлайды. Бұл индекстелу барысында Clarivate Analytics компаниясы журналды одан әрі the Science Citation Index Expanded, the Social Sciences Citation Index және the Arts & Humanities Citation Index-ке қабылдау мәселесін қарастыруда. Web of Science зерттеушілер, авторлар, баспашылар мен мекемелерге контент тереңдігі мен сапасын ұсынады. ҚР ҰҒА Хабарлары. Геология және техникалық ғылымдар сериясы Emerging Sources Citation Index-ке енуі біздің қоғамдастық үшін ең өзекті және беделді геология және техникалық ғылымдар бойынша контентке адалдығымызды білдіреді.

НАН РК сообщает, что научный журнал «Известия НАН РК. Серия геологии и технических наук» был принят для индексирования в Emerging Sources Citation Index, обновленной версии Web of Science. Содержание в этом индексировании находится в стадии рассмотрения компанией Clarivate Analytics для дальнейшего принятия журнала в the Science Citation Index Expanded, the Social Sciences Citation Index и the Arts & Humanities Citation Index. Web of Science предлагает качество и глубину контента для исследователей, авторов, издателей и учреждений. Включение Известия НАН РК. Серия геологии и технических наук в Emerging Sources Citation Index демонстрирует нашу приверженность к наиболее актуальному и влиятельному контенту по геологии и техническим наукам для нашего сообщества.

Б а с р е д а к т о р ы
э. ғ. д., профессор, ҚР ҰҒА академигі

И.К. Бейсембетов

Бас редакторының орынбасары

Жолтаев Г.Ж. проф., геол.-мин. ғ. докторы

Р е д а к ц и я а л қ а с ы:

Абаканов Т.Д. проф. (Қазақстан)
Абишева З.С. проф., академик (Қазақстан)
Агабеков В.Е. академик (Беларусь)
Алиев Т. проф., академик (Әзірбайжан)
Бакиров А.Б. проф., (Қырғыстан)
Беспәев Х.А. проф. (Қазақстан)
Бишимбаев В.К. проф., академик (Қазақстан)
Буктуков Н.С. проф., академик (Қазақстан)
Булат А.Ф. проф., академик (Украина)
Ганиев И.Н. проф., академик (Тәжікстан)
Грэвис Р.М. проф. (АҚШ)
Ерғалиев Г.К. проф., академик (Қазақстан)
Жуков Н.М. проф. (Қазақстан)
Қожахметов С.М. проф., академик (Қазақстан)
Конторович А.Э. проф., академик (Ресей)
Курскеев А.К. проф., академик (Қазақстан)
Курчавов А.М. проф., (Ресей)
Медеу А.Р. проф., академик (Қазақстан)
Мұхамеджанов М.А. проф., корр.-мүшесі (Қазақстан)
Нигматова С.А. проф. (Қазақстан)
Оздоев С.М. проф., академик (Қазақстан)
Постолатий В. проф., академик (Молдова)
Ракишев Б.Р. проф., академик (Қазақстан)
Сейтов Н.С. проф., корр.-мүшесі (Қазақстан)
Сейтмуратова Э.Ю. проф., корр.-мүшесі (Қазақстан)
Степанец В.Г. проф., (Германия)
Хамфери Дж.Д. проф. (АҚШ)
Штейнер М. проф. (Германия)

«ҚР ҰҒА Хабарлары. Геология мен техникалық ғылымдар сериясы».

ISSN 2518-170X (Online),

ISSN 2224-5278 (Print)

Меншіктенуші: «Қазақстан Республикасының Ұлттық ғылым академиясы» РҚБ (Алматы қ.).

Қазақстан республикасының Мәдениет пен ақпарат министрлігінің Ақпарат және мұрағат комитетінде
30.04.2010 ж. берілген №10892-Ж мерзімдік басылым тіркеуіне қойылу туралы куәлік.

Мерзімділігі: жылына 6 рет.

Тиражы: 300 дана.

Редакцияның мекенжайы: 050010, Алматы қ., Шевченко көш., 28, 219 бөл., 220, тел.: 272-13-19, 272-13-18,
<http://www.geolog-technical.kz/index.php/en/>

© Қазақстан Республикасының Ұлттық ғылым академиясы, 2019

Редакцияның Қазақстан, 050010, Алматы қ., Қабанбай батыра көш., 69а.

мекенжайы: Қ. И. Сәтбаев атындағы геология ғылымдар институты, 334 бөлме. Тел.: 291-59-38.

Типографияның мекенжайы: «Аруна» ЖК, Алматы қ., Муратбаева көш., 75.

Г л а в н ы й р е д а к т о р
д. э. н., профессор, академик НАН РК

И. К. Бейсембетов

Заместитель главного редактора

Жолтаев Г.Ж. проф., доктор геол.-мин. наук

Р е д а к ц и о н н а я к о л л е г и я:

Абаканов Т.Д. проф. (Казахстан)
Абишева З.С. проф., академик (Казахстан)
Агабеков В.Е. академик (Беларусь)
Алиев Т. проф., академик (Азербайджан)
Бакиров А.Б. проф., (Кыргызстан)
Беспаяев Х.А. проф. (Казахстан)
Бишимбаев В.К. проф., академик (Казахстан)
Буктуков Н.С. проф., академик (Казахстан)
Булат А.Ф. проф., академик (Украина)
Ганиев И.Н. проф., академик (Таджикистан)
Грэвис Р.М. проф. (США)
Ергалиев Г.К. проф., академик (Казахстан)
Жуков Н.М. проф. (Казахстан)
Кожаметов С.М. проф., академик (Казахстан)
Конторович А.Э. проф., академик (Россия)
Курскеев А.К. проф., академик (Казахстан)
Курчавов А.М. проф., (Россия)
Медеу А.Р. проф., академик (Казахстан)
Мухамеджанов М.А. проф., чл.-корр. (Казахстан)
Нигматова С.А. проф. (Казахстан)
Оздоев С.М. проф., академик (Казахстан)
Постолатий В. проф., академик (Молдова)
Ракишев Б.Р. проф., академик (Казахстан)
Сейтов Н.С. проф., чл.-корр. (Казахстан)
Сейтмуратова Э.Ю. проф., чл.-корр. (Казахстан)
Степанец В.Г. проф., (Германия)
Хамфери Дж.Д. проф. (США)
Штейнер М. проф. (Германия)

«Известия НАН РК. Серия геологии и технических наук».

ISSN 2518-170X (Online),

ISSN 2224-5278 (Print)

Собственник: Республиканское общественное объединение «Национальная академия наук Республики Казахстан (г. Алматы)

Свидетельство о постановке на учет периодического печатного издания в Комитете информации и архивов Министерства культуры и информации Республики Казахстан №10892-Ж, выданное 30.04.2010 г.

Периодичность: 6 раз в год

Тираж: 300 экземпляров

Адрес редакции: 050010, г. Алматы, ул. Шевченко, 28, ком. 219, 220, тел.: 272-13-19, 272-13-18,
<http://nauka-nanrk.kz/geology-technical.kz>

© Национальная академия наук Республики Казахстан, 2019

Адрес редакции: Казахстан, 050010, г. Алматы, ул. Кабанбай батыра, 69а.

Институт геологических наук им. К. И. Сатпаева, комната 334. Тел.: 291-59-38.

Адрес типографии: ИП «Аруна», г. Алматы, ул. Муратбаева, 75

E d i t o r i n c h i e f

doctor of Economics, professor, academician of NAS RK

I. K. Beisembetov

Deputy editor in chief

Zholtayev G.Zh. prof., dr. geol-min. sc.

E d i t o r i a l b o a r d:

Abakanov T.D. prof. (Kazakhstan)
Abisheva Z.S. prof., academician (Kazakhstan)
Agabekov V.Ye. academician (Belarus)
Aliyev T. prof., academician (Azerbaijan)
Bakirov A.B. prof., (Kyrgyzstan)
Bespayev Kh.A. prof. (Kazakhstan)
Bishimbayev V.K. prof., academician (Kazakhstan)
Buktukov N.S. prof., academician (Kazakhstan)
Bulat A.F. prof., academician (Ukraine)
Ganiyev I.N. prof., academician (Tadjikistan)
Gravis R.M. prof. (USA)
Yergaliev G.K. prof., academician (Kazakhstan)
Zhukov N.M. prof. (Kazakhstan)
Kozhakhmetov S.M. prof., academician (Kazakhstan)
Kontorovich A.Ye. prof., academician (Russia)
Kurskeyev A.K. prof., academician (Kazakhstan)
Kurchavov A.M. prof., (Russia)
Medeu A.R. prof., academician (Kazakhstan)
Muhamedzhanov M.A. prof., corr. member. (Kazakhstan)
Nigmatova S.A. prof. (Kazakhstan)
Ozdoyev S.M. prof., academician (Kazakhstan)
Postolatii V. prof., academician (Moldova)
Rakishev B.R. prof., academician (Kazakhstan)
Seitov N.S. prof., corr. member. (Kazakhstan)
Seitmuratova Ye.U. prof., corr. member. (Kazakhstan)
Stepanets V.G. prof., (Germany)
Humphery G.D. prof. (USA)
Steiner M. prof. (Germany)

News of the National Academy of Sciences of the Republic of Kazakhstan. Series of geology and technology sciences.

ISSN 2518-170X (Online),

ISSN 2224-5278 (Print)

Owner: RPA "National Academy of Sciences of the Republic of Kazakhstan" (Almaty)

The certificate of registration of a periodic printed publication in the Committee of information and archives of the Ministry of culture and information of the Republic of Kazakhstan N 10892-Ж, issued 30.04.2010

Periodicity: 6 times a year

Circulation: 300 copies

Editorial address: 28, Shevchenko str., of. 219, 220, Almaty, 050010, tel. 272-13-19, 272-13-18,
<http://nauka-nanrk.kz/geology-technical.kz>

© National Academy of Sciences of the Republic of Kazakhstan, 2019

Editorial address: Institute of Geological Sciences named after K.I. Satpayev
69a, Kabanbai batyr str., of. 334, Almaty, 050010, Kazakhstan, tel.: 291-59-38.

Address of printing house: ST "Aruna", 75, Muratbayev str, Almaty

NEWS

OF THE NATIONAL ACADEMY OF SCIENCES OF THE REPUBLIC OF KAZAKHSTAN

SERIES OF GEOLOGY AND TECHNICAL SCIENCES

ISSN 2224-5278

Volume 1, Number 433 (2019), 133 – 142

<https://doi.org/10.32014/2019.2518-170X.17>

ӨОЖ 551.243. 38.17.21

R. M. Sadykov¹, V. V. Korobkin²¹Kazakh National Research Technical University named after K. I. Satpayev, Almaty, Kazakhstan,²Kazakh-British Technical University, Almaty, Kazakhstan.

E-mail: sadykovraman@mail.ru; korobkin_vv@mail.ru

**GEOLOGICAL INPUT DATA ANALYSIS FOR BASIN MODELING
OF THE SOUTH PART OF KARAGANDA COAL DEPOSIT**

Abstract. Geological and geophysical data were analyzed to perform basin modeling of the south part of Karaganda coal basin. In this regard, the basic material was selected, including geological structure (stratigraphy, lithology, facial analysis of folded and faulted structures, geodynamic modeling, depositional environment).

Karaganda coal basin experienced multi-stage deformation, during the geological evolution. It is expressed in the multiple kinds of the structural forms, which described for southern and eastern parts of the Karaganda coal basin, in the areas of Alabass anticline, Maykuduk uplift and Spasskaya suture area. The main stages of the deformation, followed with orogenesis occurred in Late Paleozoic-Early Mesozoic time. The region experienced the multi-stage development, which is observed by lithological, paleogeographical, paleotectonical and geodynamical reconstructions.

The age of the layers was clarified using the existing biostratigraphic study results. During the modeling, initial geological information was calibrated with coal maturation and porosity variation with the depth data. Basin modeling allowed minimizing the geological uncertainties, such as geological reconstructions, depositional environment and enriching the database on the Karaganda coal basin geology.

Karaganda coal basin is located in the Central Kazakhstan (figure 1). It's one of the biggest coal basins in Central Asia with proven reserves of 41.3 billion tons. There are 11 coal mines operating and producing 11 mln. tons of coal annually [1-3]. Moreover, there is significant potential for coal bed methane (CBM) production. According to KazEnergy report [4], the gas content in Karaganda basin's coals reaches 20 cubic meters per ton of coals located up to 500 meters, 27 cubic meters for deeper coals. The estimate of reserves of CBM is 8 trillion cubic meters. This amount is enough to supply the local industry with gas for more than 100 years.

Understanding of the geological processes occurring in the territory of Karaganda coal basin is essential for commercial production start. The data on the basin are abundant and were obtained in previous studies [5]. New methods of basin analysis were developed [6]. The basin modeling is necessary to arrange the abundant information, and identify the zones which are prolific for CBM production.

The basin modeling is the one of the methods, which utilizes the simulation of heatflow and regional tectonics to reproduce the evolution of the basin, since its formation. The process of organic matter maturation occurs under the influence of temperature and time, while rock compaction under the pressure. Thermal modeling assesses the quality of geological concepts, reduces uncertainties in geological conditions and ages and finally gives the input data about physical properties and maturity of rocks through the time.

The most of Kazakhstan continent (accretionary collision paleo continent) was the extensive shelf sea basin with terrigenous deposition in Famennian – Early Carboniferous (figure 1, 2). In the second half of Early Carboniferous the area was divided into Teniz, Zhezkazgan and Karaganda deposition basins with

small isolated troughs on the north. The first two forms cupriferous and saliferous complexes, while to the west coal-bearing complexes were formed in Karaganda, Ekibastuz and other coal fields [1-3, 7, 8, 10].

Karaganda coal basin (figure 1), located in central part of Caledonian Segment, belongs to the intracontinental area. Carbonate-terrigenous deposits with total thickness up to 4000 meters were accumulated in Famennian – Early Carboniferous (table 1). Famennian – Middle Carboniferous deposits are conformable and forms single structural stage. The depositions below and above are separated by sharp unconformities, which unites them in a single quasi-platform complex [7, 8].

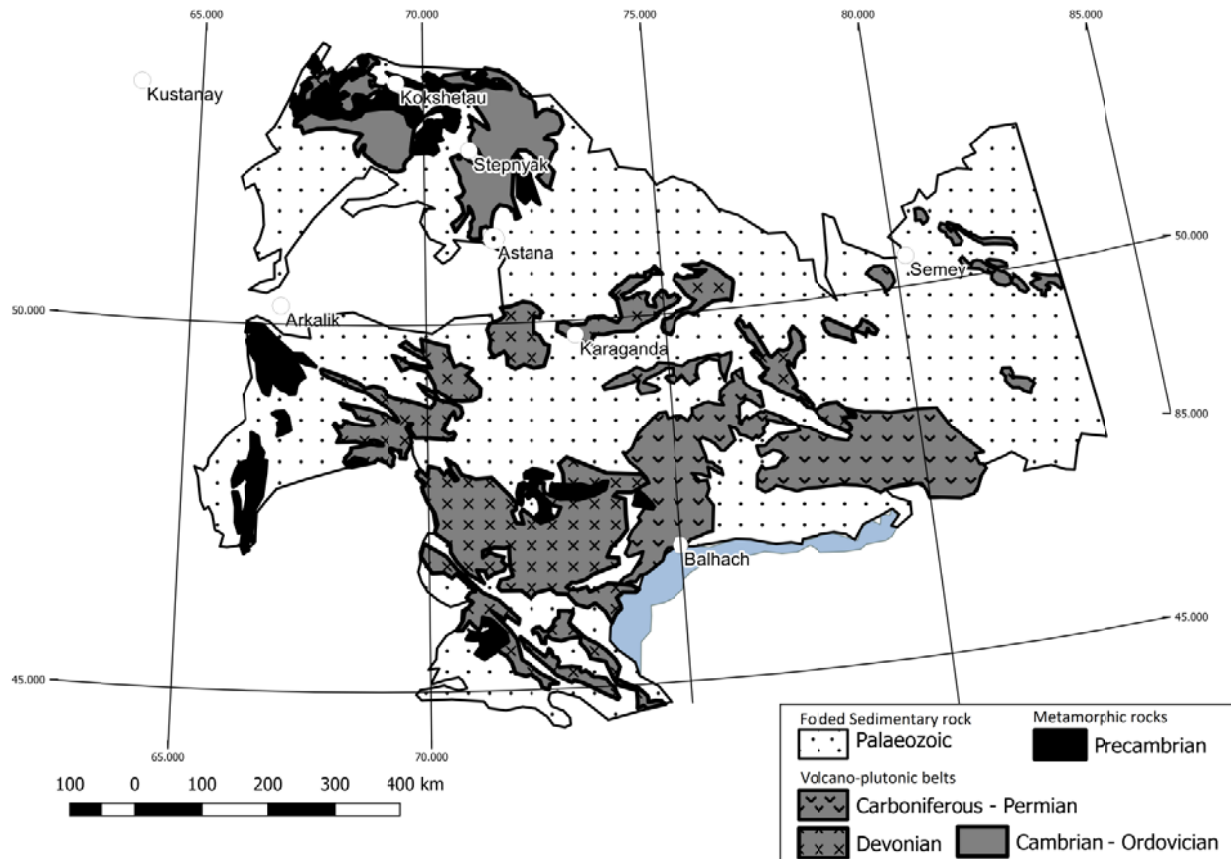


Figure 1 –Location of Karanda coalba sinrelative to Central Kazakhstan Paleozoics.

The composition and thicknesses Famennian – Middle Carboniferous stratigraphic units are shown in table 1. They are represented by interbedded green marine carbonate deposits, followed by grey lacustrine, terrigenous and coal layers with presence of the reddish continental sediment [10]. Since the Middle Carboniferous up to Late Carboniferous terrigenous clastic deposits are formed.

The Devonian and Late Paleozoic the subduction of Zhunghar-Balkhash oceanic crust under the Kazakhstan continent tend to the formation of volcanic belts in the south part of Kazakhstan continent. Zhungar-Balkhash paleo ocean’s active continental margin adjoined to the south of Karaganda coal basin. Active magmatic events formed two continental margin type volcano-plutonic belts: 1) Devonian Central Kazakhstan and 2) telescoped Late Paleozoic (Carboniferous-Permian) Pribalkhash-Ili (figure 2). Karaganda basin was backarc basin next to active continental margin, where Devonian and Late Paleozoic magmatic events took place. Subduction was directed from south-east to north-west in Karaganda basin direction [7-10].

Devonian volcano-plutonic belts are heterogeneous structures of massive Emsian and Frasnian rheolitic-granite series type volcan over intrusion. The composition of volcanic association is represented by porfirc tuffs, lavas and ignimbrites. Among the volcanic intrusions, there is calc-alkali series, which are shown by associations with reduced alkalinity and associations with high potassium shoshonite series and continental molasses [7, 8]. The thickness of volcano-plutonic structures reaches 2000-3000 meters

Table 1 – Stratigraphic column of Karaganda Basin. Bold borders show the unconformities

SYSTEM	Serie	Stage	Suite	Subsuite	Index	Lithology	Coal Index	Faunal Index	Thickness	
Quaternary					Q	Sand / Soil			0-12	
Neogene					N	Neogene clay			0-20	
Jurassic	Middle	Dogger	Mikhailovskaya		J ₂ mh	Siltstone			0-150	
			Kumyskudukskaya		J ₂ km	Conglomerates Sandstone			30-50	
	Lower	Lias	Dubovskaya		J ₁ db	Mudstone Sandstone	d _{v1} - d ₁		40-200	
			Saranskaya		T _{3r} -J _{1sr}	Sandstone Conglomerates			40-120	
Tri.	Up.	Rhetian								
Carboniferous	Middle	Namurian	Dolinskaya	Lower	C ₂ dl	Mudstone Sandstone Coalified siltstone	d ₆ - d ₁		300-350	
			Nadkaragandinskaya	Upper	C ₂ ndk ₃	Siltstone Coalified mudstone	N ₄		240-260	
				Middle	C ₂ ndk ₂	Siltstone Coalified mudstone	N ₃ N ₂		280-340	
				Lower	C ₂ ndk ₁	Siltstone Coalified mudstone	N ₁		140-180	
	Lower	Visean	Karagandinskaya	Upper	C ₁ v ₃ +Skrg ₃	Sandstone Mudstone Silty coal	K ₂₀ - K ₁₆	K ₄	160-180	
				Middle	C ₁ v ₃ +Skrg ₂	Sandstone Coal Silty coal	K ₁₅ - K ₁₀	K ₃	330-380	
				Lower	C ₁ v ₃ +Skrg ₁	Shaly coal Coal Siltstone	K ₁₀ - K ₁	K ₂ K ₁	120-160	
		Ashlyarikskaya	Upper	C ₁ v ₁₋₂ ash ₃	Siltstone Mudstone Silty coal	a ₁ - a ₄	A ₁ - A ₄	220-240		
			Middle	C ₁ v ₁₋₂ ash ₂	Silty coal Sandstone Siltstone	a ₅ - a ₁₂	A ₈ A ₈ ' A ₉	110-130		
			Lower	C ₁ v ₁₋₂ ash ₁	Silty coal Sandstone Siltstone	a ₁₃ - a ₂₀	A ₁₀ - A ₁₁	180-210		
		Akkudukskaya	Upper	C ₁ v ₁ ak ₃	Sandstone Siltstone			150		
			Middle	C ₁ v ₁ ak ₂	Siltstone Mudstone			170-210		
			Lower	C ₁ v ₁ ak ₁	Mudstone Tuffite lenses			250-440		
						C ₁ v ₁ tr	Tuffite			40-60
			Tournaisian			C ₁ t	Limestone Marl			250-330
	Devonian		Famennian			D ₃ fm	Marl			90-170
			Givetian-Frasnian			D ₂ gv-D ₃ fr	Effusive basement			2000

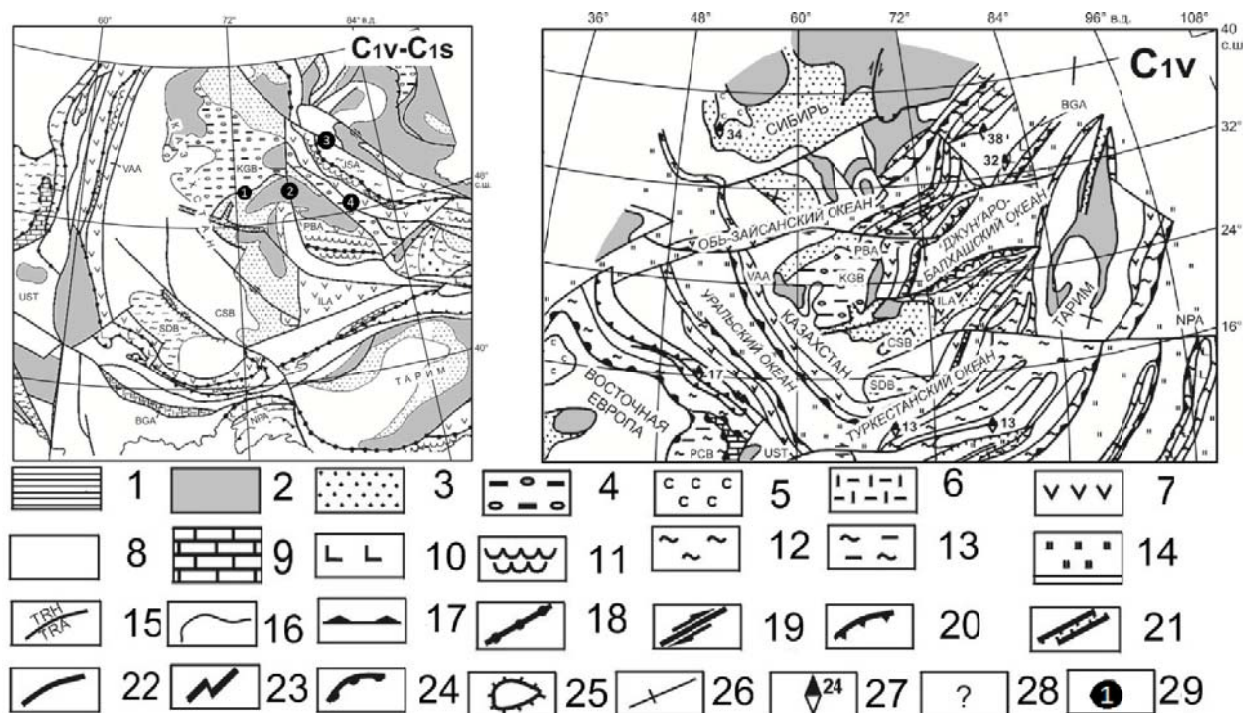


Figure 2 – Paleogeographic (1) and palynopascial (2) schemes of Central Eurasia, Early Carboniferous – Visean-Serpukhovian [7, 8].

Continental environment: 1 - uplands, 2 - lowlands, 3 - fluvial-lacustrine, 4 - carbonaceous basins, 5 - evaporite basins, 6 - rift and orogenic volcanics, 7 - marginal continental volcanic belts and mature island arcs. Marine and oceanic environments: 8 - shelf, 9 - carbonate platforms, 10 - island arcs, 11 - accretion prisms, 12 - continental slope, bathyal, 13 - deep sea (deposits of black shales), 14 - abyssal. Tectonic and other signs: 15 - climatic boundaries (STH - subtropical humid, TRH - tropical humid, TRA - tropical arid, EQU - equatorial), 16 - facies boundaries, 17 - subduction zones, 18 - sutures, 19 - shifts, 20 - thrusts, 21 - grabens, 22 - uncertain faults, 23 - spreading axes and transform faults, 24 - shelf shelves, 25 - carbonate platforms, 26 - modern geographic coordinates direction, 27 - paleomagnetic vectors and paleolatitudes, 28 - presumed and controversial conditions, 29 - Main faults (figures in circles): Spass (1) Central Kazakhstan (2) Irtysh (3) Main Chingiz (4).

Microcontinent arrays: Ustyurt (UST). Sedimentary basins: Karaganda (KGB), Chu-Sarysu (CSB), Syr Darya (SDB); island volcanic arcs and marginal continental volcano-plutonic belts: Valerianovskaya (VAA), Ili (ILA), Pribalkhash (PBA), Jarma-Saurskaya (JSA), Bogdanshanskaya (BGA), North Pamir (NPA).

within the structure and hundreds meters outside. The belt is subdivided into Betpakdala, Sarysu-Teniz, Bayanaul (North-Kazakhstan) and Chingiz segments laterally from the west to the east [11]. Frontal and rear petrochemical zones exist within the belt. The zones are characterized by development of magmatic series on the edge of high-alkali series (rear zone) in the inner part of Kazakhstan continent. Active margin of the continent is marked by the change of petro-chemical composition in the zones between the Zhungar-Balkhash and Ob'-Zaisan paleo oceans. In Betpakdala, Sarysu-Teniz and Bayanaul segments the magmatism was active continental in Early Devonian – Famennian. Asymmetric magmatic zonation is associated with the suprasubduction area [11].

In the second part of Early Carboniferous main features took place on the border between Kazakhstan continent and Zhungar-Balkhash oceanic basin. Balkhash-Ili volcano-plutonic belt of continental margin type is formed as the result of subduction of oceanic crust under the Kazakhstan continent. In the modern structure of Kazakhstan paleozoics it has the shape of arc and divided into the segments (volcanic depressions): Ili, Ketmen, Tokrau, Kalmakemel, Bakanas, Alakol. Peculiarity of the volcanism in the belt is the equal proportion of basalt-andesitic and laparite-dacite series, but the composition changes in other segments. Plagiolarite-dacite series was formed in early stage of belt development in conditions of ensialic island arc. It represented by Karkaraly suite (North Pribalkhash area). Lower Carboniferous basalts and andesitic basalts belong to sodium and calc-alkali series with high aluminum silicate content.

Abovementioned chemical characteristics show the affiliation to the volcanic series of ensialic island arc. The eruption of great amount of predominantly acidic volcanic rocks occurs in Middle-Late

Carboniferous and Permian. The rocks consist of rhyolites, rhyodacites, trachyriolites and their tuffs and the intrusions of subalkaline granitoids. Areas of basalt-andesitic volcanism related to suture zones, while acid series distributed in distal parts, forming volcano-tectonic depressions, complicated by uplifts [7-10].

Karaganda segment was located on shelf marine basin attached to Spassk thrust to the south, Central Kazakhstan fault to the east and Irtysh fault to the north-east (figure 2).

At the end of Carboniferous and Early Permian collisional stage is started. It's related with granitoid magmatism. Drainless intermountain depressions was formed in the Central Kazakhstan with its arid climate. Intracontinental sea replaced the Zhungar-Balkhash oceanic basin, connected with the ocean to the west.

Central Kazakhstan orogen growth was terminated in Early Permian, followed by complication of the structure in Late Permian – Triassic by slip movement, caused formation of large amplitude fault systems (up to several hundred kilometers). Central-Kazakhstan fault with arc shape was formed on the more ancient Ordovician-Devonian transform fault. North-East directed left-side slips was active in Spass shear zone. Formation of the «pool-apart» type basin on the territory of Karaganda coal field was related to the system of Early Mesozoic faults in Spass shear zone.

Collisional events caused the formation of complicated thrust and slit forms, especially on the south part of Karaganda basin. Taldykuduk block, located there, has a border with Spass shear zone, with distance 10-30 km from it.

As the result of the speed of orogenic process reduced and area transformed into foreland basin. Orogenic processes tend to the formation of uplift to the south of the basin, which was the source of molasses. Most of the sediment was deposited in the south part of Karaganda basin where the depression was the most. Part of these molasses then was eroded during Permian-Triassic erosion on the most of Karaganda basin (table 2).

Table 2 – Main structural complexes within Karaganda basin and their position within the crust

Structural complex	Age, lithology	Position
Upper platform	Neogene-Quaternary Gravel, pebble, sand, loam, sandy loam	Karaganda basin
Lower platform	Triassic - Jurassic sandstones, siltstones, marls with coal	
Quasi platform	Middle Carboniferous molasses (conglomerates, sandstones, siltstones) Famennian – Lower Carboniferous carbonate and terrigenous deposits with coal	
Oceanic continental	Lower Devonian – Frasnian stage contrast composition of the volcanic series - rhyolites, rhyodacites, dacites and their tuffs	The rim of Karaganda basin, monoclines. On the south, next to the Spass shear zone. Has complexities in folds and faults
Ensisal island arc	Silurian Wackes, greywackes, turbidites Middle – Upper Ordovician andesibasalts, andesites and their tuffs	The rim of Karaganda basin
Oceanic	Cambrian – Lower Ordovician jasper; flint	North-west border of the basin and basin basement

Mesozoic rocks of Karaganda basin was formed in Rhetian – Lias and Dogger time. The deposition rate increased in Rhetian – Lias was reduced to Dogger. In Rhetian the thick layer of molasses was deposited. Lias deposits were partially eroded in the Middle of Dogger, when area relief stabilized. Climate aridization in Late Jurassic caused the termination of coals formation, which is manifested in Dogger deposits (up to 150 meters) consist of reddish terrigenous rocks (figure 4).

The area was uplifted and eroded by the Late Jurassic. The tectonic movements was caused by the Late Cimmerian phase of Cimmerian orogenesis. Hercynian thrusts reactivated and new set of thrusts like Akzhar thrust was formed. The area was exposed to denudation up to Late Jurassic – Early Paleozoic. After the erosion, the area became covered by unlithified fluvial deposits of Neogen and Quaternary Ages. The sediments sources were hills located to the south and supplied by the modern rivers Nura and Sarysu. The area get its final appearance in the Middle of Neogene [7].

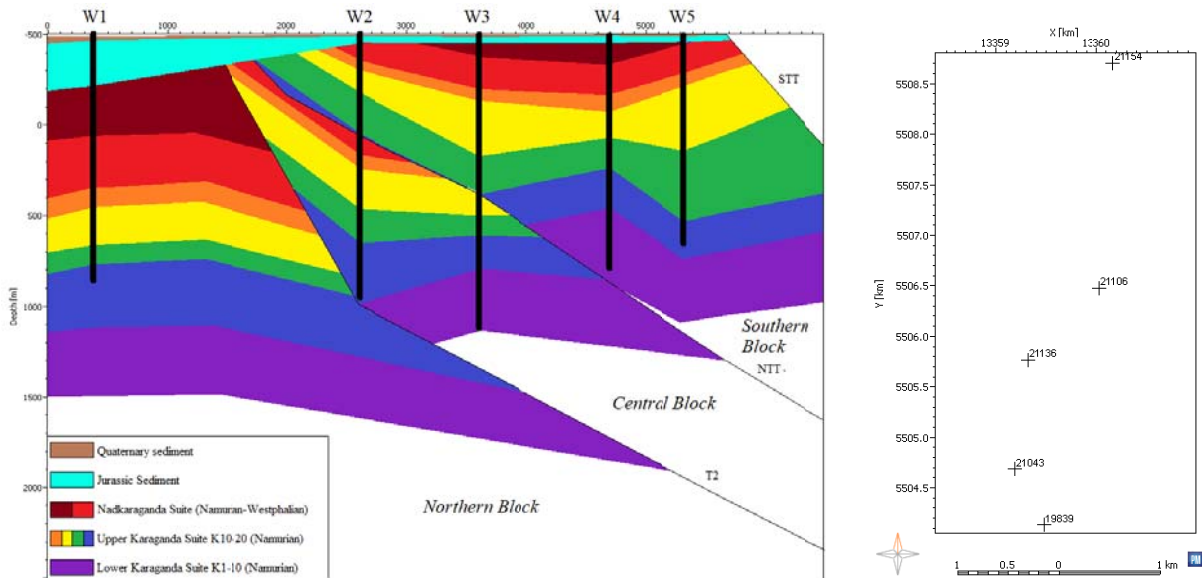


Figure 3 – Schematic cross-section and map of wells representing the modeled southern bound of Karaganda basin. Two major thrust (North-Taldykuduk Thrust NTT and Thrust 2T2) divide the model into 3 main maturation blocks. Small amplitude faults are not shown

Karaganda basin is divided into 4 zones. They are Tentek, Sherubay-Nura, Karaganda and Verkhnesokurskaya. Within the basin, there are structural complexes contain Cambrian, Ordovician – Silurian, Devonian, Carboniferous, Jurassic and Cenozoic rocks. Taldykuduk block (figure 4) suffer significant structural transformation. It has overthrusts, thrusts and other faults, which are related to Spass shear zone. Fault-blocked structure of the region results the formation of cleats within the coals. Therefore the area is interesting from the CBM production point of view.

There are four stages of Carboniferous rocks deformation [6-8].

The first stage (Asturian phase) is the commencement of the collision or initial orogenesis stage, when the depression was subdivided into Karaganda, Shiterdy, Pavlodar and Teniz synclinories (figure 2). New thrust, including modeled North Taldykuduk thrust and Thrust 2 was originated since (figure 5). The basin had western border with Teniz depression, and pinched out to the east.

The second stage (Pfalzian phase) is the collisional stage, which caused the compartmentalization of coal beds by basement movement. As the result, Karaganda coal basin was subdivided into 3 parts: western part with Zaviyalov and Samara graben-synclines, central part with Karaganda basin and eastern part with Ashisu syncline (figure 6, 7). Zaviyalov graben-syncline and Teniz depression are separated by Zhaksykart horst-anticline. Zhailmin horst-anticline is the border between Karaganda basin and Ashisu syncline.

The third stage (Early Cimmerian phase) is the postcollisional stage refers to early epeiric platform orogenesis, which expressed in thick deposition of molasses at the end of Lias. Sediment sources were uplifted and area was depressed. After that, the area was eroded up to Middle Dogger, when relief became flatten. Complete isolation from Paleotethys resulted aridization of the climate.

The final stage (Late Cimmerian phase) is the postcollisional stage refers to late epeiric platform orogenesis, followed the dogger succession, caused the territory uplift and erosion. Furthermore, the deformation reactivates existing and generates new (Akzhar thrust) faults and thrusts. In addition to these stages, insignificant deformation occurred in Neogene and Quaternary.

Input data, required for thermal modeling, according to [12] is following (figure 2-4):

- Structural model, including layers thickness, unconformities, faults, thrusts;
- Conceptual geological model (stratigraphic column, sedimentation settings, lithologies);
- Thermal and burial history;
- Tectonic history of the basin – tectonic model (burning, uplifting, erosion etc);
- Calibration data (vitrinite reflectance, temperature and porosity);
- Boundary conditions of water depth, heatflow and surface temperature.

Table 3 – Absolute ages of layers and their thicknesses

Layer name	Event age	Base absolute age, Ma	Top absolute age, Ma	Av. Thickness, m	
Q1	Pleistocene-Holocene	0.13	0.00	3	
J_Eroded_2	Oxfordian	185.32	154.00	900	
J_Eroded_1	Doggerian	202.72	185.32	500	
J	Liasian – Doggerian	203.00	202.72	8	
C_Eroded_2	Stephanian – Westphalian	313.00	295.00	2800	
C_Eroded_1	Namurian	320.94	313.00	1500	
Nadkaraganda		322.37	320.94	271	
K20		322.85	322.37	90	
K19		323.41	322.85	106	
K18		323.85	323.41	83	
K17-1		324.11	323.85	50	
K16-K17		324.21	324.11	19	
K15		324.45	324.21	45	
K14		324.77	324.45	60	
K13		324.93	324.77	30	
K13-base		325.03	324.93	20	
K12-3		325.48	325.03	84	
K12		325.71	325.48	45	
K11		326.00	325.71	54	
K10		Late Visean	326.17	326.00	25
K9			326.22	326.17	8
K8-1			326.30	326.22	11
K7-K8			326.49	326.30	27.8
K6			326.72	326.49	34
K5			327.08	326.72	54
K4	327.35		327.08	40	
K3	327.55		327.35	28.75	
K2	328.00		327.55	67	
K1	Middle Visean		329.00	328.00	64
A-suite			329.00		

Table 4 – Tectonic model of Karaganda basin

Age	Lithological and facial depositional environment	Tectonic movement direction	Orogenic phase
Neogene - Quaternary	Continental	Uplift	~ Alpine
Jurassic (eroded)	Continental Platform Arid	Uplift	~ Late Cimmerian
Doggerian		Immersion	~ Early Cimmerian
Liasian		Immersion	
Late Carboniferous - Permian	Continental Arid	Uplift	~ Pfalzian ~ Asturian
Visean – Namurian	Continental, shallow marine, boggy-lacustrine	Immersion	~ Saurian
Visean			
Tournai - Famennian	Continental, shallow marine		
Early Devonian - Frasnian	Andean type active continental margin	Uplift	~ Akkadian
~ Unconformity			

Р. М. Садыков¹, В. В. Коробкин²

¹Казахский национальный исследовательский технический университет им. К. И. Сатпаева,
Алматы, Казахстан

²Казахстанско-Британский технический университет, Алматы, Казахстан

АНАЛИЗ ИСХОДНЫХ ГЕОЛОГИЧЕСКИХ ДАННЫХ ДЛЯ БАСЕЙНОВОГО МОДЕЛИРОВАНИЯ ЮЖНОЙ ЧАСТИ КАРАГАНДИНСКОГО УГОЛЬНОГО МЕСТОРОЖДЕНИЯ

Аннотация. Выполнен анализ геолого-геофизических материалов для проведения бассейнового моделирования южной части Карагандинского угольного месторождения. В этой связи подобран необходимый базисный материал, включающий данные по геологическому строению (стратиграфии, литологии, фациальному анализу складчатым и разрывным структурам, геодинамическому моделированию, термобарическим условиям осадконакопления) рассматриваемого объекта.

В ходе геологической эволюции Карагандинский угольный бассейн испытал многоэтапные деформации, выраженные в многочисленных сочетаниях структурных форм, которые описаны для южной и восточной частей Карагандинского бассейна в зонах Алабасской антиклинали, Майкудукского поднятия и Спасской шовной зоны. Главные этапы деформации сопровождаемые активным орогенезом приходятся на позднепалеозойско-раннемезозойское время. Начиная с фамена, и по настоящее время регион прошел сложную многоэтапную историю развития, на что указывают литолого-фациальные, палеогеографические, палеотектонические и геодинамические реконструкции.

Возраст рассматриваемых толщ горных пород был уточнен на основании биостратиграфических данных предыдущих исследований. Исходная геологическая информация в процессе моделирования увязана с калибровочными данными зрелости углей и вариациями их пористости по глубине. Бассейновое моделирование позволило существенно минимизировать геологические неопределенности, такие как геодинамические реконструкции, условия осадконакопления и пополнить базу знаний о геологическом строении Карагандинского бассейна.

Р. М. Садыков¹, В. В. Коробкин²

¹Қ. И. Сәтбаев атындағы Қазақ ұлттық техникалық зерттеу университеті, Алматы, Қазақстан,

²Қазақстан-Британ техникалық университеті, Алматы, Қазақстан

ҚАРАҒАНДЫ КӨМІР БАСЕЙНІНІҢ ОҢТҮСТІК БӨЛІГІН БАСЕЙНДІК МОДЕЛЬДЕУ ҮШІН НЕГІЗГІ ГЕОЛОГИЯЛЫҚ ДЕРЕКТЕРДІ ТАЛДАУ

Аннотация. Қарағанды көмір бассейнінің оңтүстік бөлігін бассейндік модельдеу үшін геологиялық-геофизикалық деректер талданды. Осыған байланысты негізгі деректертер іріктелді, оның ішінде зерттеу объектісінің геологиялық құрылымы (стратиграфия, литология, қатпарлы және үзілімді құрылымдарды фациалық талдау, геодинамикалық модельдеу, шөгінділердің жиналуының термобарикалық жағдайы).

Қарағанды көмір бассейні геологиялық эволюция кезінде көп сатылы деформацияны бастан кешті. Ол Қарағанды көмір бассейнінің оңтүстік және шығыс бөліктерінде, Алабас антиклиналь аудандарында, Майкұдық көтерілісінде және Спасск шеткі ауданында құрылымдық пішіндердің түрлі жиынтықтарынан көрініс табады. Белсенді орогенезбен қатар жүрген деформацияның негізгі кезеңдері кейінгі палеозой және ерте мезозой уақытында болды. Фаменнен бастап бүгінгі күнге дейін бұл аймақ күрделі көрсатылы даму тарихын кешірді. Бұл аймақтың литологиялық, палеогеографиялық, палеотектоникалық және геодинамикалық реконструкция нәтижесінен байқалады.

Бұған дейін жасалған биостратиграфиялық зерттеулердің нәтижелерін пайдалана отырып қабаттардың жасы анықталды. Модельдеу кезінде бастапқы геологиялық ақпарат көмірдің пісіп-жетілуі бойынша калибрлеу нәтижелерімен және көмір қабаттарының тереңдікпен кеуектілігінің өзгеруімен сәйкестендірілді. Басейндік модельдеу геологиялық реконструкция, шөгінділердің жиналуының жағдайы сынды мәселелерде геологиялық тұрлаусыздықты азайтуға мүмкіндік берді, және Қарағанды көмір бассейнінің геологиясы бойынша деректерді кеңейтті.

Information about authors:

Sadykov R.M., Kazakh National Research Technical University named after K. I. Satpayev, Almaty, Kazakhstan; sadykovraman@mail.ru; <https://orcid.org/0000-0002-5936-2036>

Korobkin V.V., Kazakh-British Technical University, Almaty, Kazakhstan; korobkin_vv@mail.ru; <https://orcid.org/0000-0002-1562-759X>

REFERENCES

- [1] Zholtaev G.Zh., Zhukov N.M., Bespaev Kh.A. The theory of forecasting and evaluating the minerals and raw materials base of the Republic of Kazakhstan // *News of the National Academy of Sciences of the Republic of Kazakhstan. Series of Geology and Technical Sciences*. 2018. Vol. 2, N 428. P. 36-43; <https://doi.org/10.32014/2018.2518-170X>
- [2] Bekzhanov G.R., Koshkin V.Y., Nikitchenko I.I., et al. Geological structure of Kazakhstan. Almaty: Academy of mineral resources of the Republic of Kazakhstan, 2000. P. 396.
- [3] Nikitchenko I.I. Minerals of Kazakhstan. Explanatory note to the 1:1 000 000 scale map of Kazakhstan Mineral Resources. Kokshetau, 2002. P. 188.
- [4] KazEnergy. The National Energy Report 2015, "KAZENERGY" ALE. P. 374.
- [5] Alekseev A.D., Ulyanova E.V., Vasilkovskiy V.A., et al. Structure peculiarities of coal's hazardous zones // *GIAB*. 2010. N 8. P. 152-163.
- [6] Kovalchuk A.B., Hardinge B.C. Coal Industry of the Former USSR: Coal Supply System and Industry Development. CRC Press, 2002. P. 144.
- [7] Atlas of the Lithology-Paleogeographical, Structural, Palinspastic and Geoenvironmental Maps of Central Eurasia. Scientific Research Institute of Natural Resources YUGGEO. ISBN: 9965-13-566-5. Almaty, 2002. Fig. 38, p. 132.
- [8] Korobkin V.V., Buslov M.M. Geodynamics and Tectonophysics of the western part of Central-Asian folded belt (paleozoids of Kazakhstan) // *Geology and geophysics*. 2011. Vol. 52, N 12. P. 2032-2055.
- [9] Buslov M.M. Terrain Tectonics of the Central Asian Folded belt // *Geodynamics and Tectonophysics*. 2014. Vol. 5, issue 3. P. 641-665.
- [10] Bekman V.M., Koshkin V.Y., Gabai N.L. Carboniferous system // *Geological Map of Kazakh SSR. Scale 1:500000. Serie Central Kazakhstan. Explanatory note*. Almaty, 1981. P. 98-125.
- [11] Kurchavov A.M., Grankin M.S., Malchenko E.G. et al. Zonation, Segmentation and Paleogeodynamics of Devonian volcanic belts of Central Kazakhstan // *Geotectonics*. 2000. N 4. P. 32-43.
- [12] Hertle M., Littke R., 2000. Coalification pattern and thermal modeling of the Permo-Carboniferous Saar Basin (SW-Germany) // *Int. J. Coal Geol.* 42. P. 273-296.

**Publication Ethics and Publication Malpractice
in the journals of the National Academy of Sciences of the Republic of Kazakhstan**

For information on Ethics in publishing and Ethical guidelines for journal publication see <http://www.elsevier.com/publishingethics> and <http://www.elsevier.com/journal-authors/ethics>.

Submission of an article to the National Academy of Sciences of the Republic of Kazakhstan implies that the described work has not been published previously (except in the form of an abstract or as part of a published lecture or academic thesis or as an electronic preprint, see <http://www.elsevier.com/postingpolicy>), that it is not under consideration for publication elsewhere, that its publication is approved by all authors and tacitly or explicitly by the responsible authorities where the work was carried out, and that, if accepted, it will not be published elsewhere in the same form, in English or in any other language, including electronically without the written consent of the copyright-holder. In particular, translations into English of papers already published in another language are not accepted.

No other forms of scientific misconduct are allowed, such as plagiarism, falsification, fraudulent data, incorrect interpretation of other works, incorrect citations, etc. The National Academy of Sciences of the Republic of Kazakhstan follows the Code of Conduct of the Committee on Publication Ethics (COPE), and follows the COPE Flowcharts for Resolving Cases of Suspected Misconduct (http://publicationethics.org/files/u2/New_Code.pdf). To verify originality, your article may be checked by the Cross Check originality detection service <http://www.elsevier.com/editors/plagdetect>.

The authors are obliged to participate in peer review process and be ready to provide corrections, clarifications, retractions and apologies when needed. All authors of a paper should have significantly contributed to the research.

The reviewers should provide objective judgments and should point out relevant published works which are not yet cited. Reviewed articles should be treated confidentially. The reviewers will be chosen in such a way that there is no conflict of interests with respect to the research, the authors and/or the research funders.

The editors have complete responsibility and authority to reject or accept a paper, and they will only accept a paper when reasonably certain. They will preserve anonymity of reviewers and promote publication of corrections, clarifications, retractions and apologies when needed. The acceptance of a paper automatically implies the copyright transfer to the National Academy of Sciences of the Republic of Kazakhstan.

The Editorial Board of the National Academy of Sciences of the Republic of Kazakhstan will monitor and safeguard publishing ethics.

Правила оформления статьи для публикации в журнале смотреть на сайте:

[www:nauka-nanrk.kz](http://www.nauka-nanrk.kz)

ISSN 2518-170X (Online), ISSN 2224-5278 (Print)

<http://www.geolog-technical.kz/index.php/en/>

Верстка Д. Н. Калкабековой

Подписано в печать 06.02.2019.

Формат 70x881/8. Бумага офсетная. Печать – ризограф.

16,7 п.л. Тираж 300. Заказ 1.